



ATLANTIC SERIES FRONT LOADER®



It's rugged. Heavy duty. And built to take on your toughest commercial & residential routes.

- Consistent collection performance for over 25 years and the industry standard front loader collector of the last decade.
- Easy to service because of its primitive technology design.
- Maximizes efficiency with a fast pack cycle that keeps the 12-cubic-yard hopper clear at all times, saving time on densely populated routes.
- Excalibre™ cylinders feature a hardened tool steel scraper that drastically reduces hydraulic contamination.
- Compaction force of 118,800 psi crushes almost any type of refuse you can throw at it.
- 10,000-lb-rated arm capacity does the heavy lifting for you.
- Eight-point locking tailgate ensures it stays shut and eliminates leakage.

PERFORMANCE SPECIFICATIONS (in seconds)*

WORKING RPM	IDLE	1350 RPM
Arm Down	11	6
Arm Up	10	6
Fork Down	4	3
Fork Up	3	3
Packer Extend	N/A	20
Packer Retract	N/A	9
Ejector Extend	28	N/A
Ejector Retract	10	N/A
Top Door Open	8	7
Top Door Closed	7	6
Tailgate Open	28	N/A
Tailgate Closed	31	N/A
Seal Height	50 in	

Compaction Force = 118,800 psi

*Cycle times may vary slightly

ARM ASSEMBLY

Arm Side Plate	1/4 in. grade 80
Arm Construction	Internal reinforcement

FORKS

Fork Construction	A36, 1.5 in x 60 in
-------------------	---------------------

HOPPER SPECIFICATIONS

Hopper Capacity	12 cu yd
Hopper Floor	1/4 in. AR400
Upper Hopper Sides	3/16 in. AR200
Lower Hopper Sides	3/16 in. AR400
Hopper Width	84 in

PACKER/EJECTOR SPECIFICATIONS

Lower Face Plate	5/16 in. AR200
Upper Face Plate	3/16 in. AR200
Packing Panel Floor Tracks	3/8 in. grade 50 high-strength steel
Top Wear Strips	3/8 in. AR400
Side Wear Strips	1/2 in. AR400
Bottom Wear Strips	3/8 in. X-Wear

BODY SPECIFICATIONS

Body Floor	3/16 in. AR450
Body Roof	10-gauge AR200
Body Side Walls	1/8 in. AR450

TAILGATE SPECIFICATIONS

Tailgate Rear and Side Walls	1/8 in. AR450
Eight-Point Automatic Locking Tailgate	

OPERATIONS

Multiplex and distributed CAN-based controls offering state of the art technology (sealed keypads, backlit screens, operator status lights and diagnostic display)

Air or Rabbit Ear Joystick compatible with optional auto dump features

HYDRAULICS

Pump	Vane or gear with pack-on-the-go flow control system
Control Valves	Parker VA35, MRV setting 2,700 psi
Oil Reservoir Capacity	50 gallon
Return Filter	5 micron
Suction Strainer	100 mesh stainless steel with magnets

CYLINDERS

Ejector Cylinder	(36-40 yd) 5-1/2 in. 3-stage 164 in. (43-45 yd) 5-1/2 in. 3-stage 181 in.
Arm Cylinder	4-1/2 in. bore x 2-1/2 in. rod x 46 in. stroke
Fork Cylinder	3-1/2 in. bore x 2 in. rod x 26 in. stroke
Tailgate Cylinder	3-1/4 in. bore x 2 in. rod x 38 in. stroke

PAINTING

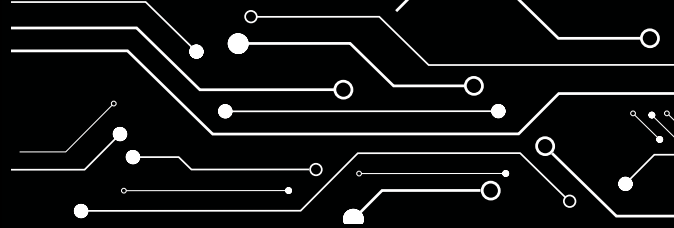
Packer and components steel shot blasted prior to priming with high solids epoxy primer

Finish: PPG high-performance, high solids acrylic urethane topcoat

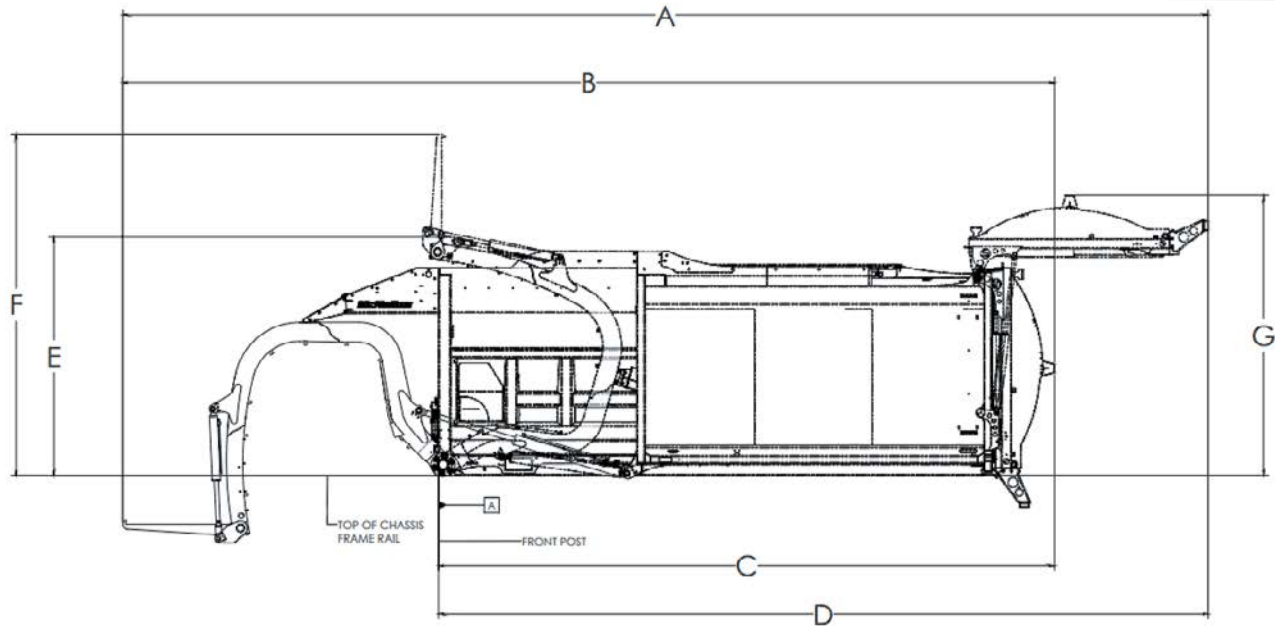
McNEILUS WARRANTIES

Contact your McNeilus representative on warranty details. For more information, go to www.McNeilusGarbageTrucks.com

ATLANTIC SERIES FRONT LOADER®



- Point to point diagnostics makes it easy to diagnose functional commands.
- High quality abrasion-resistant steel in all high-wear areas for outstanding strength and durability.
- Pusher and tag axle options available in multiple configurations.
- Multiplexed and CAN-based controls are one of the most advanced, and easy to use in the industry, eliminating more than 800 feet of wire in the cab.
- McNeilus partners with top equipment dealers across North America to provide best-in-class support and access to service and parts close to home.
- Proudly made in the USA.



DIMENSIONS

DESCRIPTION	36 YD (27.5 M ³)		40 YD (30.6 M ³)		43 YD (32.9 M ³)		45 YD (34.4 M ³)	
(A) *Length: Arms Down, TG Open	510 in.	12,954 mm	510 in.	12,954 mm	544 in.	13,818 mm	544 in.	13,818 mm
(B) *Length: Arms Down, TG Closed	433 in.	10,998 mm	451 in.	11,455 mm	467 in.	11,862 mm	485 in.	12,319 mm
(C) Length: Arms Stowed, TG Closed	274 in.	6,960 mm	293 in.	7,442 mm	308 in.	7,823 mm	327 in.	8,306 mm
(D) Length: Arms Stowed, TG Open	351 in.	8,915 mm	351 in.	8,915 mm	385 in.	9,779 mm	385 in.	9,779 mm
(E) Height: Arms/Fork Down	119 in.	3,023 mm	119 in.	3,023 mm	119 in.	3,023 mm	119 in.	3,023 mm
(F) *Height: Arms Stowed/Forks Up	171 in.	4,343 mm	171 in.	4,343 mm	171 in.	4,343 mm	171 in.	4,343 mm
(G) Height: Tailgate Raised	140 in.	3,556 mm	158 in.	4,013 mm	140 in.	3,556 mm	158 in.	4,013 mm
Overall Body Width	102 in.	2,591 mm	102 in.	2,591 mm	102 in.	2,591 mm	102 in.	2,591 mm

*Dimensions include a standard 62" fork length. Dimensions will vary with the 70" extended fork option.



We offer a complete line of aftermarket parts and services to fit all makes and models. View and purchase at www.StreetSmartParts.com or call 888.686.7278.



Learn more at www.McNeilusGarbageTrucks.com | StreetSmartParts.com

© 2024 McNeilus Truck and Manufacturing. McNeilus, the McNeilus logo, Street Smart Parts, and the Street Smart Parts logo are trademarks of McNeilus Truck and Manufacturing, Dodge Center, MN, USA. All other designated trademarks are the property of their respective owners. Specifications, descriptions and illustrations in this brochure are accurate as shown at the time of publication, but are subject to change without notice. Illustrations may include optional equipment and accessories and may not include all standard equipment.